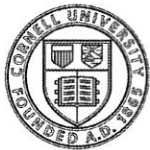


# HOME GROUNDS FACT SHEET



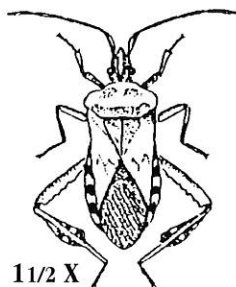
Cornell University  
Cooperative Extension  
Nassau County



Nassau County  
Horticulture Program  
East Meadow Farm  
832 Merrick Avenue  
East Meadow, NY 11554  
Phone: 516-565-5265

## Western Conifer Seed Bug *an unwanted house guest*

by Carolyn Klass, Entomologist, Cornell University



The western conifer seed bug, *Leptoglossus occidentalis* (Heteroptera: Coreidae), is becoming a nuisance pest to some New York residents. The bug has the habit

of entering buildings at the onset of cold weather in the late summer or early fall as it seeks a protected site to spend the winter. These bugs do not bite or sting, nor do they cause damage to the home. They will, however, give off a pungent odor if you handle them which is part of the insect's defensive strategy. They also may make a buzzing sound when flying.

### History

The range of the western conifer seed bug has been expanding. In 1992 we began to get reports from western New York State about these rather large insects in homes. The first documented collection of this species in New York State was from an Orchard Park (Erie County) home in January 1990. By February of 1992 Dr. Wayne Gall of the Buffalo Museum of Science had received specimens from 9 counties of western and central New York. By 1994 we were seeing samples from Long Island and the lower Hudson Valley region.

This species was first described in 1910 from California, and was reported in Iowa in 1956. By the 1970's it was established in Wisconsin and Illinois, and by the mid-1980's was found in Minnesota, southeastern Michigan and southwestern Ontario.

### Description

The western conifer seed bug belongs to the family Coreidae, commonly called leaf-footed bugs, and like many members of this family, it has a flattened, leaf-like expansion on the hind legs. The adult is about 3/4 inch (16-20 mm) in length and is dull brownish. There is a faint white zig-zag stripe across the midpoint of its upper surface. When the insect takes flight, it lifts the wings to reveal bright yellowish orange areas on its back.

The leaf-footed bugs use piercing sucking mouthparts to pierce the scales of conifer seeds and suck out the seed pulp. The list of host plants includes white

pine, red pine, Scots pine, Austrian pine, mugo pine, white spruce, Douglas-fir and hemlock. Often these trees are planted or growing near homes, and if that is the case, the bugs may seek the nearby buildings as an overwintering site.

### Life Cycle

In spring these bugs move out of doors to coniferous trees nearby. The bugs feed on the developing seeds and early flowers of different species of conifers. Females are reported to lay rows of eggs on needles of the host trees, which hatch in about 10 days. Young nymphs then begin to feed on tender cone scales and sometimes the needles. The nymphs are orange and brown, becoming reddish-brown to brown as they develop. Nymphs pass through five stages and reach adulthood by late August. Adults feed on ripening seed until they seek overwintering quarters.

### Integrated Pest Management (IPM)

#### Considerations

IPM is a common sense approach to pest control and plant care. It employs a number of measures to prevent, control or reduce problems. Always use the least toxic methods first. A good mechanical control, in many instances, is to vacuum the insects and then throw the bag away. Regarding household pests, in addition to regular house-cleaning, the best preventive method is to monitor the home, i.e. note any cracks in foundations, air spaces between windows and frames, poorly-fitting doors, moisture from leaks, etc., and correct such examples/situations.

#### Management

If these bugs are a problem in your area, be sure to screen attic or wall vents, chimneys and fireplaces to mechanically block their point of entry. Eliminate or caulk gaps around door and window frames and soffits, and tighten up loose fitting screens, windows or doors. Insects already in the home can be vacuumed up. There are no pesticides registered for control of this leaf-footed bug.

B-2-27 reviewed RT 1/03

*Building Strong and Vibrant New York Communities*

Cornell Cooperative Extension in Nassau County provides equal program and employment opportunities.