

HOME GROUNDS FACT SHEET



Cornell University
Cooperative Extension
Nassau County



Horticulture Center
Demonstration & Community Gardens
at East Meadow Farm
832 Merrick Avenue
East Meadow, NY 11554
Phone: 516-565-5265

Rose Problems

Integrated Pest Management (IPM)

Considerations

IPM is a common sense approach to pest control and plant care. It employs a number of measures to prevent, control or reduce plant problems. These include using resistant plant varieties, proper plant selection and placement, good aftercare and biological and/or mechanical controls. As a last resort, after all other remedies have been explored, a pesticide* that is least toxic to people and natural predators, can be considered. Prior to using any pesticides, plants should always be monitored for the degree of infestation and a sensible control measure considered.

* A pesticide is a substance that kills, or attempts to kill, a particular pest, e.g. *insecticide*, *fungicide*, *herbicide*, etc.

Diseases

Black Spot



Black spot is a serious problem in this area. Symptoms of this fungal disease include the formation of nearly circular black spots on the upper leaf surface. The spots have a fairly uniform black color with

fringed margins. The spots enlarge from pinhead size to the diameter of a dime and coalesce to form large irregular blotches. The entire leaf may become yellow or there may be a yellow area around individual spots. Infected leaves usually drop off after becoming yellow. The leaf spots are unsightly, but the most serious effect on the plant is premature defoliation. The early loss of leaves reduces the food manufacturing capacity of the plant and predisposes it to injury from other diseases, insects, and environmental conditions.

Management

Practice plant sanitation, especially in autumn. Chemical pesticides may be available. If you choose to use a chemical pesticide, contact your local Cooperative Extension office for specific recommendations. Use according to label directions.

Powdery Mildew

The growth of powdery mildew is encouraged by high humidity. The disease affects many kinds of plants and is particularly severe on phlox, lilacs and roses. Rambler roses may be infected as soon as new leaves develop. The disease is well established by late May and often prevents blooming. Hybrid tea and floribunda roses may be infected by June, but powdery mildew is more severe on this variety in late summer as nights become cooler and there is more water condensation on the plant from heavy dew and ground fog.



First symptoms of powdery mildew are a slight curling of the leaves followed by white powdery fungal growth. Buds may not open, those that do produce malformed flowers. The leaves become blistered and have a reddish cast. Powdery mildew is more severe on the succulent growth that frequently results from excessive use of nitrogen fertilizers.

Management

Clean up in autumn. Improve air circulation by preventing other plants from crowding the roses. Chemical pesticides may be available. If you choose to use a chemical pesticide, contact your local Cooperative Extension office for specific recommendations. When disease first appears, apply spray materials according to label directions.

Botrytis

Botrytis blossom blight affects buds and partially opened flowers. Grayish-brown fungus grows on the buds and petals. Flower parts come apart easily. The fungus overwinters on affected plant parts, especially winter-killed stems.

Management

Practice plant sanitation. Faded and infected blooms should be picked off and destroyed. Improve air circulation. Chemical pesticides may be available. If you choose to use a chemical pesticide, contact your local Cooperative Extension office for specific recommendations. If wet conditions develop, apply spray materials according to label directions.

D-2-14 AAH reviewed RT 1/03

-continued-

Building Strong and Vibrant New York Communities

Cornell Cooperative Extension in Nassau County provides equal program and employment opportunities.

Insects

Ants

Ants will not injure roses directly. However, if you see ants around your roses look for aphids. Ants herd and milk aphids as humans do cows. They bring aphids to plants to 'graze.'

Aphids

Aphids are small, soft-bodied insects that can be green, yellow, brown, pink, tan or black. Some adults have wings. Aphids suck the juices from plant tissue. Plant growth may be stunted and deformed. Aphids pick up diseases as they move from plant to plant. When they insert their mouth parts and begin to feed they can inoculate a healthy plant with infectious organisms.

Management

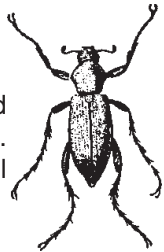
Lady bird beetles (Lady bugs) and the larva of Lace wings prey on aphids. Predatory insects are available by mail order. Spray with insecticidal soap. Be sure to coat the under sides of the leaves. Sprays of horticultural oil when plants are dormant will help decrease aphid populations. Chemical pesticides may be available. If you choose to use a chemical pesticide, contact your local Cooperative Extension office for specific recommendations. Use according to label directions.

Beetles

Japanese beetle, rose chafer beetle and other leaf eating beetles attack roses. Chewed leaves will be obvious; many will have a lacy appearance.

Management

Hand pick beetles. Chemical pesticides may be available. If you choose to use a chemical pesticide, contact your local Cooperative Extension office for specific recommendations. Begin sprays when beetles are observed and continue at weekly intervals until beetle season is over.



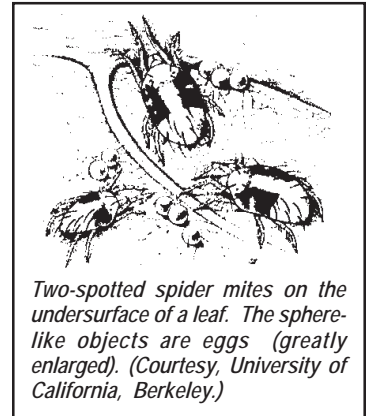
Rose Chafer

Spider Mites

Spider mites are very tiny spider-like creatures that suck the juices from plants. Yellowing of leaves with a slight stippled pattern will be the first symptoms noticed on the plant.

Management

Apply horticultural oil in April before new growth begins. During growing season spray with insecticidal soap when mites are present. Be sure to soak the under sides of leaves. Chemical pesticides may be available. If you choose to use a chemical pesticide, contact your local Cooperative Extension office for specific recommendations. Check labels for host plants or sites before using.



Two-spotted spider mites on the underside of a leaf. The sphere-like objects are eggs (greatly enlarged). (Courtesy, University of California, Berkeley.)



"This publication contains pesticide recommendations. Changes in pesticide regulations occur constantly and human errors are still possible. Some materials mentioned may no longer be available, and some uses may no longer be legal. All pesticides distributed, sold or applied in New York State must be registered with the New York State Department of Environmental Conservation (DEC). Questions concerning the legality and/or registration status for pesticide use in New York State should be directed to the appropriate Cornell Cooperative Extension specialist or your regional DEC office (631) 444-0341. Read the label before applying any pesticide. Cornell Cooperative Extension and its employees assume no liability for the effectiveness or results of any chemicals for pesticide usage. No endorsement of products is made or implied."